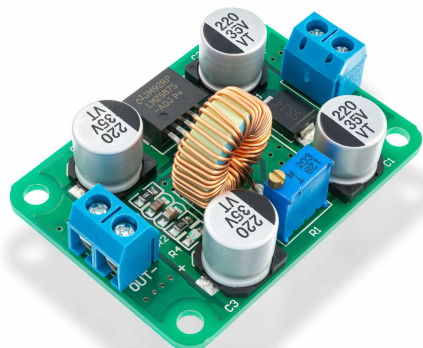




STEP-UP MODUL LM2587



Weight 31 g

DESCRIPTION

Boost (step up) modul. Ulazni napon povećava na željeni uz visoku efikasnost.

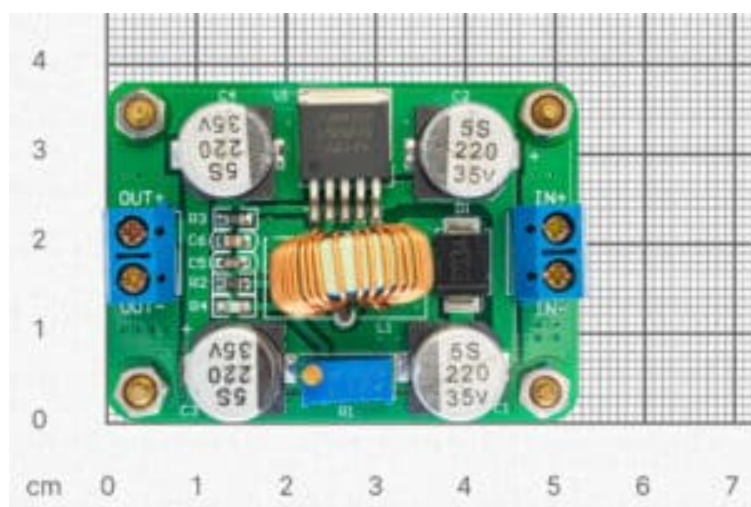
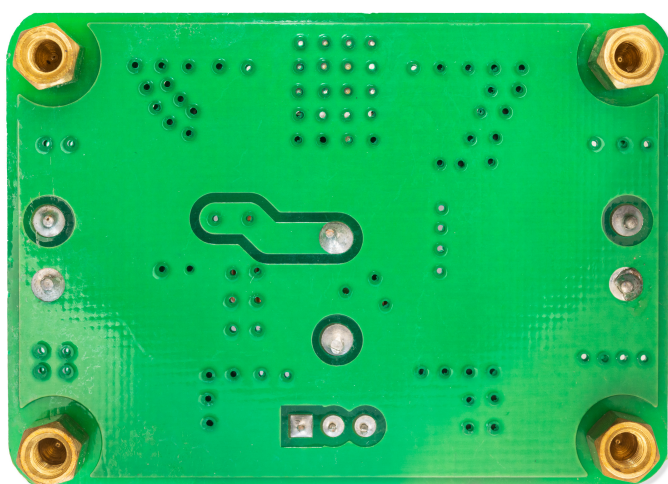
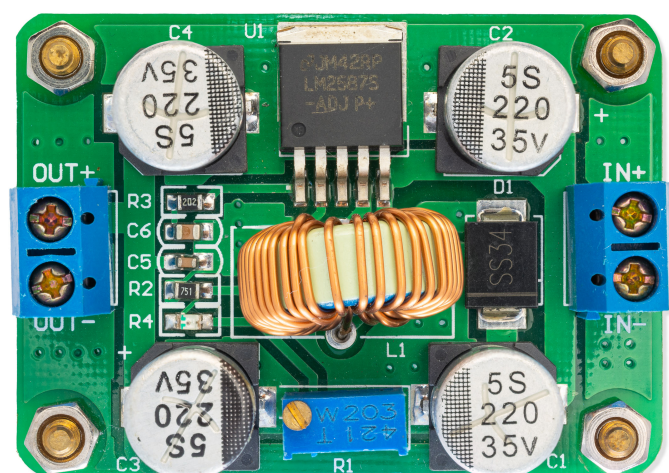
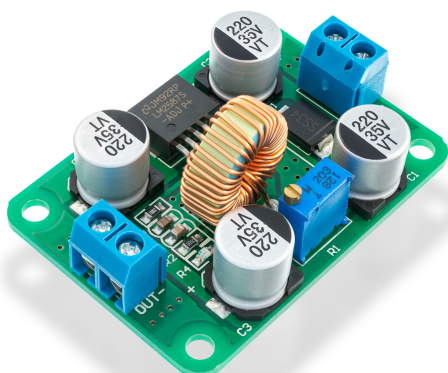
FEATURES

- Ulazni napon: 3.5 - 30 V
- Izlazni napon: 4.0 -30 V (podesiv)
- Izlazna struja: (max) 5A
- Efikasnost: oko 90%, do 94%, ovisi o ulaznom i izlaznom naponu
- Dimenzije: 52 x 38 x 20 cm

USEFUL LINKS

- [Datasheet](#)

OTHER IMAGES



Weight

31 g